



A fantastic night at a
world heritage site
featuring John Ken
Nuzzo and the Ryukyu
Symphony Orchestra
along with spectacular
projection mapping

La Bohème as you've never experienced it before

Giacomo Puccini

La Bohème

John Ken Nuzzo (Rodolfo)



Miyuki Miyagi (Mimi)
Ritsuko Chinen (Mimi)
Atsuko Tomori (Musetta)
Risako Kinjo (Musetta)
Yuichiro Ichikawa (Marcello)
Yoshio Maekawa (Schaunard)
Taiki Tanaka (Colline)
Osamu Oshiro (Colline)
Tomoyuki Saijo (Benoit/Alcindoro)

Conductor: Shuya Okatsu

Orchestra: Ryukyu Symphony Orchestra

Nakagusuku Castle Ruins

A magical night with spectacular projection mapping



Okinawa Opera Festival 2024

Open Air Opera Concert with Digital Visual Art at the Nakagusuku Castle Ruins World Heritage Site

Jan. 13 (Sat) & Jan. 14 (Sun), 2024

Curtain time: 6:00 PM
(Doors open 3:00 PM)

Nakagusuku Castle Ruins

Site address: 1258 Aza Tomari, Nakagusuku-son, Nakagami-gun, Okinawa

SS ¥15,000 / S ¥10,000 / A ¥6,000 / B (standing) ¥2,000

Organizer: Kitanakagusuku Village Tourism Association/Co-organizer: Nakagusuku Village Tourism Association/Sponsors: Okinawa Prefecture, Okinawa General Bureau of Cabinet Office, Okinawa Convention & Visitors Bureau, Kitanakagusuku Village, Nakagusuku Village, East Coast Region Sunrise Promotion Council, Kitanakagusuku Village Society of Commerce and Industry, Kitanakagusuku Village Cultural Association, NHK Okinawa Broadcasting Station, Ryukyu Broadcasting Corporation, Okinawa Television Broadcasting Co., Ltd., Ryukyu Asahi Broadcasting Co., Ltd., The Okinawa Times Co., Ltd., The Ryukyu Shimpo Co., Ltd., Radio Okinawa Corporation, and FM-Okinawa/In cooperation with Nakagusuku Park/Contact: Kitanakagusuku Village Tourism Association Phone: 098-923-5888 Email: info@kitapo.jp

With funding from the Japan Tourism Agency's Open the Treasure of Japan Project

Experience the excitement of La Bohème like never before at the Nakagusuku Castle Ruins, a world heritage site.

Puccini's masterpiece, La Bohème, a tragic tale of romance between young lovers eking out an existence in the darkest of times, comes to the ruins of Nakagusuku Castle. This world heritage site is a stronghold built by Gosamaru, a master castle architect who also found himself living in dark times. Featuring world-renowned opera singer John Ken Nuzzo as Rodolfo, the Okinawa Opera Festival 2024 will bring together an ensemble cast of internationally acclaimed voices from Okinawa as well as the rest of Japan. Conductor Shuya Okatsu, a veteran music director of opera houses spanning the globe, and the Ryukyū Symphony Orchestra will create a dynamic outdoor performance for the ages. Bearing witness to the tragedy of the COVID-19 pandemic and other tumultuous world events, we too find ourselves living in dark times. Watching this inspiring tale of young lovers finding the light even in their darkest hour, set against the magnificent backdrop of this world heritage site, will strike a resonating chord with audiences. Featuring food trucks offering bento boxes made with local ingredients and more, this unique festival will let you experience a "champuru" (i.e., an Okinawan dish made from a mixture of varied ingredients) of local cuisine as well as Ryukyuan and Western culture to be savored by all five senses.

La Bohème, one of the most popular operas The flame of love to be rekindled in Okinawa

Paris in the 1830s. It's a bitterly cold Christmas Eve, and the struggling young bohemian artists, Marcello, the painter and Rodolfo, the poet, are hard at work. They are then joined by Schaunard, a musician, and Colline, a philosopher. The four idealistic young bohemians, who are poor but rich in spirit, are all having a good time. Since it's Christmas, Marcello, Schaunard, and Colline head out to Café Momus to dine. Poet Rodolfo remains alone in the garret. Suddenly his neighbor Mimi, a seamstress, shows up to borrow a candle. The two meet and immediately fall in love. One of the four, Marcello, also reunites with his former sweetheart Musetta at Café Momus, and their love is rekindled.

Two months go by, and on a cold, snowy night Mimi, uncertain about Rodolfo's feelings for her, comes to the tavern where Rodolfo and Marcello are staying to ask Marcello for advice. Rodolfo, unable to save Mimi from a deadly lung illness due to his own poverty, tells Marcello that it would be better for her if they broke up. Mimi secretly overhears their conversation. Shocked, she makes a painful decision to leave him in the spring. Meanwhile, Marcello, who can't stand Musetta's flirtatiousness anymore, breaks up with her after quarreling.

Four young men gather in the garret just like the old days. Rodolfo and Marcello are heartbroken after parting with their girlfriends. Musetta suddenly appears, bringing Mimi, who appears haggard and weak. Mimi wishes that she could see Rodolfo one more time before she dies. The two recall their happy days together. They remember the passionate love they shared that day in the cold garret, but time doesn't wait for them. Mimi quietly draws her last breath as her friends look on.



Tenor John Ken Nuzzo Rodolfo

John Ken Nuzzo made his debut at the Vienna State Opera in 2000. He won the Austrian Eberhard Waechter Gesangsmedalien, a special medal for newcomers in the operatic field. After making appearances at Vienna Volksoper and Salzburg Festival, he debuted with the Metropolitan Opera in 2003. He has appeared on NHK Kouhaku Utagassen (Red and White Song Battle) and also sang the theme song for NHK's historical drama series "Shinsen-Gumi." His fame stretches well beyond his wide circle of classical music fans. He captivates audiences with his exceptional voice and technique, as well as his wide repertoire. He has performed for the Emperor and Empress of Japan as well as the Pope, and has also sung national anthems at MLB, NFL, and international soccer games. Throughout his career, he has worked with internationally acclaimed singers, such as Edita Gruberová, Angela Gheorghiu, Renate Bruson, and Leo Nucci. He has also worked with national and international orchestras, including the NHK Symphony Orchestra, the Tokyo Symphony Orchestra, the Sapporo Symphony Orchestra, the Kyoto Symphony Orchestra, the Tokyo Philharmonic Orchestra, the Nagoya Philharmonic Orchestra, the Sendai Philharmonic Orchestra, the Orchestra Ensemble Kanazawa, and the Munich Philharmonic Orchestra. In recent years, he has received high praise for his duet with Plácido Domingo in the opera "Les Pêcheurs de Perles" and for his performance with world-famous horn player, Radek Baborák, in Britten's "Serenade for Tenor, Horn and Strings, Op. 31." He has also released selected songs from Franz Schubert's "Die schöne Müllerin" on streaming platforms and has performed recitals focusing on the works of American composers. He has achieved the 13th Idemitsu Music Award.

Official website: <http://www.jkn-tenorissimo.com/>

Performers



Rodolfo
John Ken Nuzzo
Appearing on both days



Mimi
Miyuki Miyagi
Appearing on the 13th



Mimi
Ritsuko Chinen
Appearing on the 14th



Musetta
Atsuko Tomori
Appearing on the 13th



Musetta
Risako Kinjo
Appearing on the 14th



Marcello
Yuichiro Ichikawa
Appearing on both days



Schaunard
Yoshio Maekawa
Appearing on both days



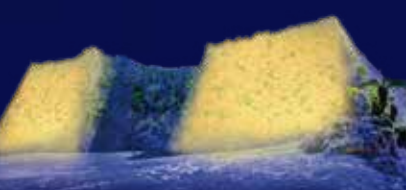
Colline
Taiki Tanaka
Appearing on the 13th



Colline
Osamu Oshiro
Appearing on the 14th



Benoit/Alcindoro
Tomoyuki Saijo
Appearing on both days

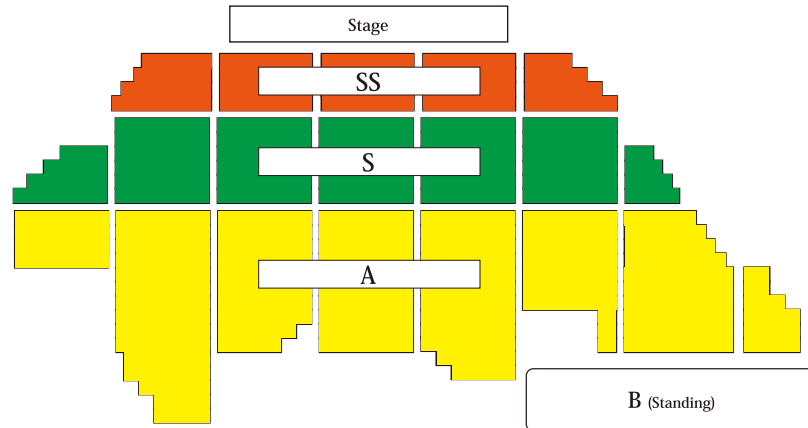


Cover cast member: Naoki Tasato as Rodolfo
Assistant conductors: Shimpei Shibata and Junpei Nishigami

Dates Jan. 13 (Sat) & Jan. 14 (Sun), 2024 **Curtain time:** 6:00 PM
(Doors open 3:00 PM)

■ Estimated run time: 2 hours 30 minutes (including intermission) *Entry to the venue may be restricted after the performance begins.

■ Seats and prices (including tax) *All seats are reserved.



SS ¥15,000 S ¥10,000 A ¥6,000 B(Standing) ¥2,000

*Please note that performers are subject to change without notice. *No admission for children under school age. *Some seats may have limited views of the stage and subtitles. *Performances will only be cancelled in extreme weather. Audience members are advised to bring warm clothing and/or rain gear depending on the weather conditions. *Performances will be held outdoors at night in a natural environment. Please watch your step. *The venue is a world heritage site. Please DO NOT damage the world heritage site in any way. Violators may be asked to leave the venue. *If you are unsure of your seat, please ask the staff. *No photography, filming, and sound recording is allowed during the performance. *Failure to follow the instructions and recommendations of the staff may result in the denial of entry into the venue. Entry into the venue will be restricted during the performance. *The organizer and venue manager will not be held liable for any accidents that occur at the venue due to a failure to follow the instructions and recommendations of the staff.

Okinawa Opera Festival 2024 Official Website



■ Ticket on-sale date

General sales start
Wednesday,
Nov. 1, 2023, 12:00 Midnight

*Tickets will not be sold over the phone.
*Tickets cannot be exchanged or refunded unless the performance is cancelled.

■ Ticketing platforms

■ Special HIS English booking site
<https://www.his-j.com/japan-tourist/okinawa/>



■ e+
<https://eplus.jp/okinawa-opera2024/>

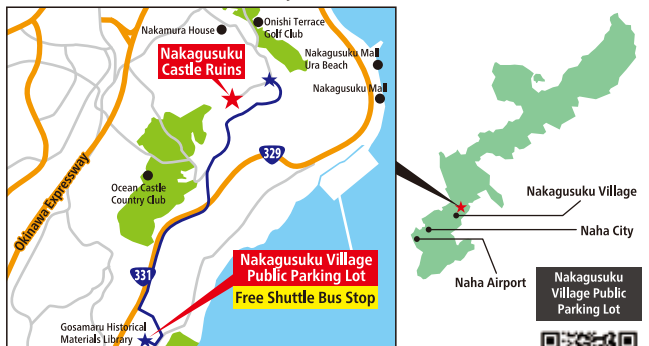


■ FamilyMart stores

■ Kitanakagusuku Village Tourism Association Office (1st floor, Rycom 1, Kitanakagusuku-son)

■ Directions

Parking is not available at the venue. Use the Nakagusuku Village public parking lot (400 parking spaces). Parking: Nakagusuku Village public parking lot (210 Aza Asato, Nakagusuku-son), next to the Gosamaru Historical Materials Library



*A free shuttle bus service will be available between the Nakagusuku Village public parking lot and the venue. (Approximately a 10-minute ride/Scheduled to operate from 2:40 p.m.)
*Parking spaces cannot be reserved at the Nakagusuku Village public parking lot. Please wait until a space becomes available or use another parking lot.

