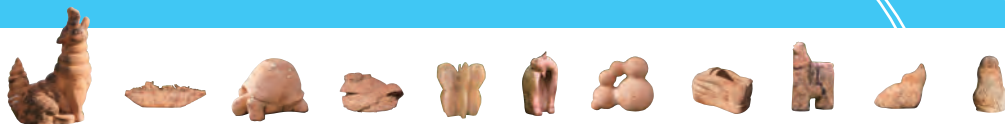


The th most fun place in Okinawa.

The undiscovered
Kitanakagusuku



TAKE
FREE!





What kind of place is Kitanakagusuku?



Get to know more about Kitanakagusuku!

- Village with Japan's longest average female lifespan
- World Heritage Nakagusuku Castle Site listed as one of Japan's top ten popular castles
- Japan's earliest blooming sunflower fields
- AEON MALL Okinawa Rycom Okinawa largest shopping mall

Legend for store page icons



Free Wi-Fi



Credit Card



Japanese-style room



Kid's room



US dollars accepted

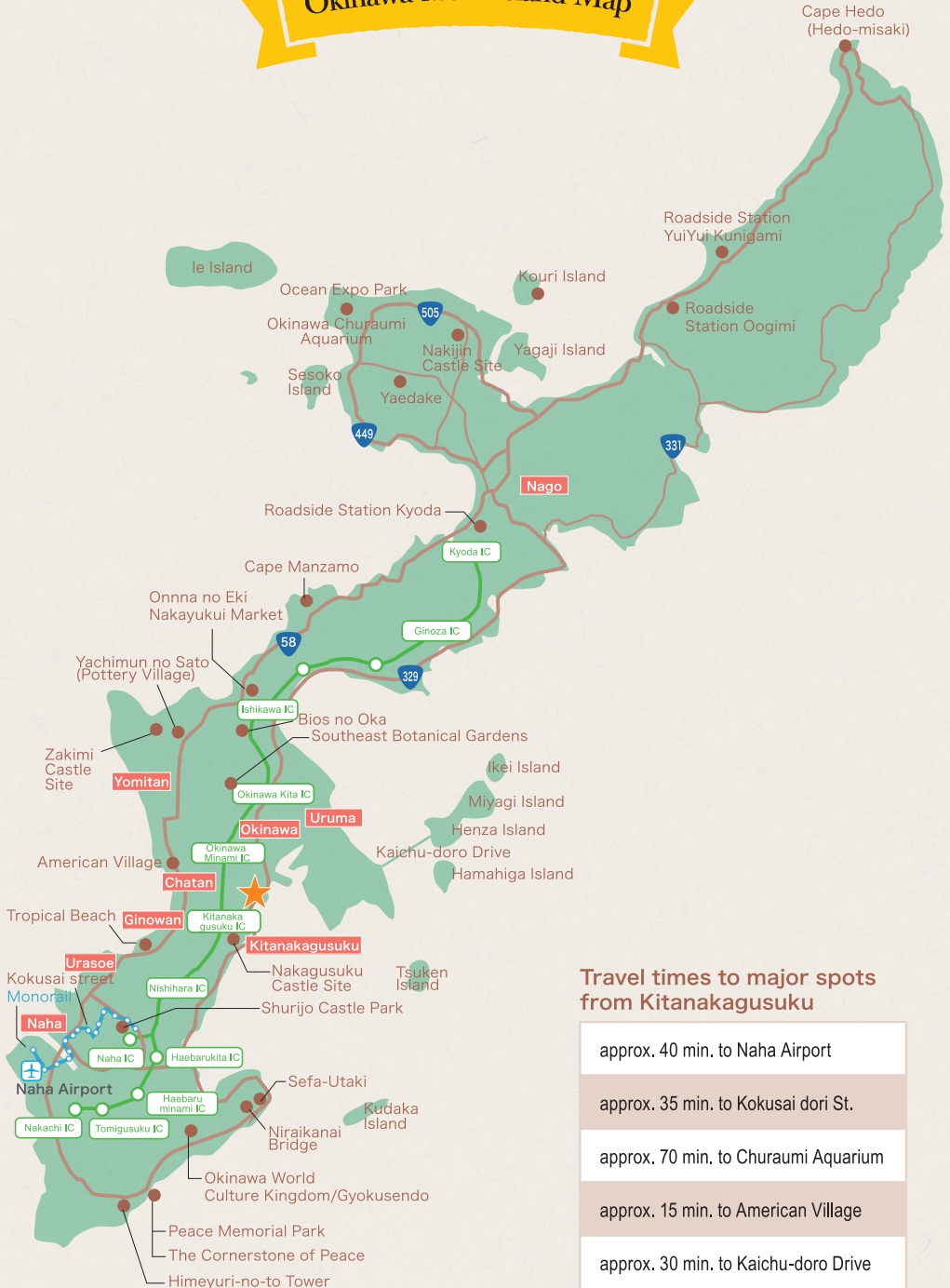
The unauthorized copying and reproduction of any of the photos/articles contained in this magazine is strictly prohibited. Information concerning the stores contained in this magazine is current as of February 2017. Content is subject to change. Please confirm details before you visit.

CONTENTS

- 04 **Getting around**
- 06 **Pick up some takeout and head to the beach**
- 10 **Famous places to have breakfast in Kitanakagusuku**
- 12 **International gourmet food in Kitanakagusuku you can take back to your hotel to enjoy**
- 14 **Fun locations around Kitanakagusuku**
- 20 **AEON MALL Okinawa Rycom**
- 22 **Cultural facilities in Kitanakagusuku**
- 24 **Exploring the area around Kitanakagusuku Castle**
- 26 **Popular spots around Kitanakagusuku recommended by the local area promotion team**
- 28 **Kitanakagusuku event calendar**
- 30 **Kitanakagusuku Map**



Okinawa Main Island Map



Travel times to major spots from Kitanakagusuku

approx. 40 min. to Naha Airport
approx. 35 min. to Kokusai dori St.
approx. 70 min. to Churaumi Aquarium
approx. 15 min. to American Village
approx. 30 min. to Kaichu-doro Drive

Getting around

The Primary means of getting around in Okinawa is by motor vehicle.

There are a variety of options such as car rentals, taxis and buses.

These available options are all depending on what you are trying to get done.

Using the famous local routes of 58,329,330&331 will make it very easy to reach your desired destination.

<Access from the airport>

Main forms of transport from Naha Airport include taxis and buses. The base fares for these options are slightly cheaper than mainland Japan making them an attractive option.

[Local Bus / Express Bus]

Airport - AEON MALL Okinawa Rycom

Express Bus No.152/¥970 1hour

Airport - AEON MALL Okinawa Rycom

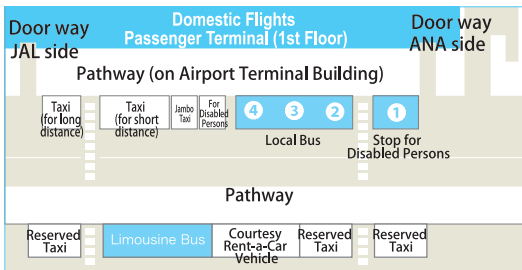
Futenma-Airport Line No.25/ ¥860 1hour15min.

Naha Bus

Airport - Kishaba bus stop Express Bus No.111 /

¥920 45min.

Naha Airport Taxi Stand/Bus Stop



<Yui Rail>

Yui Rail is an urban monorail linking Naha Airport to Shuri Station. There are no delays, making it easy to estimate times and because it provides easy access to Kokusai dori St. and Shuri Castle, it is one of the more convenient forms of transport for travelers.

Fair: Naha Airport Station to Prefectural Office Station (Kokusai St.)

Adult ¥260 Child ¥130

Special free tickets are also available

<Car rental>

A large number of travelers to Okinawa use rental cars. There is huge range of vehicles to choose from and some plans will allow you to drop your vehicle off at your destination. In recent years, travelers can also rent Tuk Tuks from Thailand and rental cars that look like go-carts. We invite you look around and see what is available.

<Highways >

Okinawa is car oriented society, so highways are regularly used by the drive.

The distances between interchanges are also short, making it easy to close in on your destination. A lot of the time, highways are used to travel even short distances in Okinawa and are relatively hassle free. There are two service areas located at Nakagusuku and Igei.

Highway toll charges Unit: Yen Normal passenger vehicle

1020	880	770	680	610	500	410	340	310	200	—	Naha	—
980	840	730	640	600	460	370	290	270	160	Nishihara JCT	—	—
920	790	670	590	500	400	320	240	200	200	Nishihara	150	180
810	680	560	480	440	290	200	130	120	170	Kitanaka gusuku	240	270
—	—	—	—	—	—	—	—	120	210	Kishaba	250	280
720	580	460	370	330	190	Okinawa Minami	—	170	270	320	330	—
630	500	370	290	230	Okinawa Kita	170	—	230	340	390	420	—
480	330	170	140	Ishikawa	200	290	—	370	460	500	540	—
—	—	—	Yaka	140	230	320	—	400	490	540	570	—
330	170	Kin	—	170	300	390	—	470	550	600	630	—
170	Ginoza	170	—	300	420	480	—	570	650	700	730	—
Kyoda	170	310	—	410	520	590	—	670	760	810	840	—

Discovered in Kitanakagusuku

Tasty treats perfect for the beach.

Okinawa is famous for its beautiful beaches. You can pick up some takeout and take it to the beach introducing you to a range of eateries to make your ocean experience more enjoyable.





place / Arahabeach

LET'S GO BEACH

Pick up some take-out and head to the beach!



Baked in a wood-fired, hand-made oven, the bread is springy and dense. They are always changing the dough and toppings, revolutionizing bread.



Our little hidden-away bakery

Stone-oven Bakery Tokiwaya

[MAP/P.31:①](#)

Bread baked in a wood-fired oven using yeast grown from vegetables etc. gives a gentle texture you can't experience anywhere else. There are 6-7 varieties of generous sized sandwiches and nearly all of the ingredients used for toppings, including mayonnaise, red bean paste and peanut butter etc. are hand-made.



map

☎098-959-5450

Address/531 Zukeran,
Kitanakagusuku Village
Hours/11:00~18:00
Closed/Sun・Mon
Parking/available



available



Goya Bento

Okinawa's favorite bento (lunch box). Only in Okinawa will you find such a generous amount of sides that cover even the top of the rice.(¥400)



Peru blended coffee

The blend is changed each season and mixed with only the finest quality milk and syrup. (¥340 With milk)



Daily smoothie

Enjoy the freshness of seasonal ingredients and the smooth texture of this daily smoothie. (¥864)



Ham & cheese sandwich combo

Simple ham, cheese and lettuce sandwich. Try it with our curly fries with unique texture! (¥750)



Okinawa-style soba noodles

All this for just 100 yen! These noodles are a must with your bento box.(¥100)



Paneton chico

Sweet originating from Peru, South America. Moist texture accented with orange peel and walnuts. (¥290)



Raw chocolate ganache tart

The identity behind the rich chocolate is... Avocado! A sweet treat that is good for both the body and the soul. (¥735)



Root beer

Root beer has always been a constant favorite among the Okinawan local. Try it once and you will be hooked for life. (¥220 Regular size)

04



Toriyoshi Bento

MAP/P.30:⑤

You will struggle to make your choice at the multitude of bento boxes on offer at Toriyoshi Bento.

03



Azama Coffee

MAP/P.31:④

Enjoy organic coffee from Peru that is hard to find in Japan.

02



Karma Organics

MAP/P.31:③

Karma Organics stocks a range of unprocessed organic products based on the concept of "What you do makes you".

01



A&W Yagibaru

MAP/P.31:②

This is the place for you if you want to experience the American Okinawa! Okinawa's first A&W fast food restaurant affectionately referred to by the locals as "Enda".

☎098-935-1611

Address/81 Toguchi, Kitanakagusuku Village
Hours/5:00~14:00
Closed once sold out
Closed/Sun
Parking/available

☎098-989-5233

Address/24 Chunjun, Kitanakagusuku Village
Hours/10:00~18:00
Closed/Sat
Parking/available
available

☎098-989-4861

Address/2F, 1468-4 Adaniya, Kitanakagusuku Village
Hours/11:00~17:00 (L.O16:45) Juice (L.O16:30)
Closed/Thu•Fri•Sat
HP/karmaorganics.jp
available

☎098-933-1479

Address/700 Yagibaru, Kitanakagusuku Village
Hours/Open 24hrs
Closed/Open 365 days/year
Parking/available
HP/awok.co.jp



MORNING

Famous places to have breakfast in Kitanakagusuku



AM plate
¥950

PLOUGHMAN'S LUNCH BAKERY

MAP/P.31:⑥

Located on top a hill, Ploughman's Lunch Bakery offers a tempting AM plate (limited to 10 plates each day). Consisting of bread, soup, salad and scrambled eggs served with a home-made dip, it is a simple line-up, but the gentle flavors will give you relaxed moment.

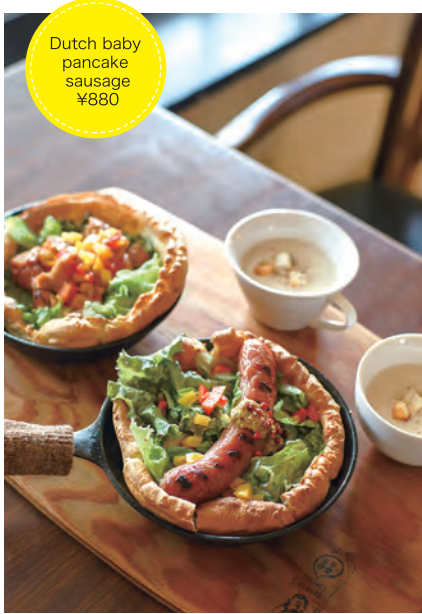


map

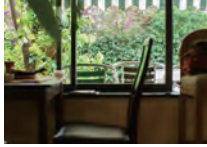
☎098-979-9097

Address/#1735, 927-2 Adaniya,
Kitanakagusuku Village
Hours/8:00~16:00
Closed/Sun Parking/available
HP/ploughmans.net

Famous places to have breakfast in Kitanakagusuku



Dutch baby pancake sausage ¥880



Try the teriyaki chicken or macaroni Dutch baby pancake or just go simple and have it plain.

Say "Good Morning" to Kitanakagusuku from the café

Mother Coffee

MAP/P.31:⑦

The interior and exterior of Mother Coffee was completed by hand by the owner, Kirishima-san. One item on the menu, the Dutch baby pancake is a gastronomic delight consisting of dough placed inside a small frying pan and baked in the oven. Mother Coffee opens at 7am and is said to be popular among the breakfast crowd.



map

☎098-923-3723

Address/588 Zukeran, Kitanakagusuku Village

Hours/7:00~17:00

Closed/Thu

Parking/available

<http://mothercoffee.net>

☑ Accepted 💰 Accepted

American breakfast you can enjoy in Okinawa

The Rose Garden

MAP/P.31:⑧

Just as the name suggested "The Ross Garden" originating from the owner's love of roses, you can find roses in every corner. The Rose Garden offers a full scale menu. From soup and dessert that have that special taste.



map

☎098-932-2800

Address/165-1 Yagibaru, Kitanakagusuku Village

Hours/8:00~24:00(L.O.23:45)

Closed/Open 365 days/year

Parking/available

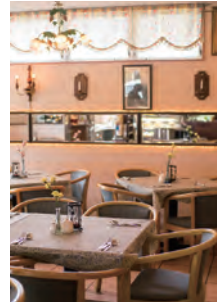
<https://r.gnavi.co.jp/f447900/>

☑ Accepted

💰 Accepted



Eggs benedict ¥1,300



One mouthful of the English muffins baked fresh every morning since the Rose Garden opened topped with poached egg and hollandaise sauce will take you to heaven.

Something to take back to your hotel to enjoy.

International gourmet food in Kitanakagusuku

While Okinawa may conjure up images of American food, Italian and Jamaican restaurants are also very popular. Pick up some of these together with an Orion beer (Okinawa famous) and enjoy a leisurely night in or dinner with friends at your hotel or choose to eat-in.

Original tacos containing a specialty of Kitanakagusuku Village, Asa seaweed.

Asa tacos
¥270

Roast chicken and Mexican Food MARISOL

MAP/P.30:⑩

MARISOL offers up their own original tacos made using Asa seaweed, a rare commodity even in Okinawa. These tacos are a perfect match with the vivid, colorful restaurant interior.

☎098-989-0874

Address/902 Toguchi,

Kitanakagusuku Village

Hours / Mon

11:00~17:00 (L.O 16:00)

Wed~Sun

11:00~18:00 (L.O 17:00)

Closed / Tue Parking/available

<http://okinawamarisol.ti-da.net/>

☑ Accepted

☑ available

☑ available



map



Gachimai chicken plate ▶

The mixed plate loaded with chicken and tacos is their signature dish. ¥1,480



Authentic American pizza & café

Kozy's Pizza

MAP/P.31:⑩

Kozy's Pizza offers 7 varieties of pizza and a seasonal menu. The authentic American pizzas are popular among international visitors and come in 4 sizes; S, M, L and XL. We invite you try our most popular, Super Deluxe, loaded with 8 toppings that all complement each other perfectly.



map

☎098-923-0993

Address/#1808 Parkside Terrace

638-1, Adaniya, Kitanakagusuku Village

Hours/11:30~21:00

Closed/Tue(Irregular holidays)

Parking/available

<http://kozy's-pizza.com>

☑ available

☑ available



Super
Deluxe (M)
¥1,512





Jerk chicken
plate
¥1,300

Jerk chicken
rice bowl
¥500



Grilled jerk chicken

Bamboo Café Kitanakagusuku

MAP/P.31:㉑

Authentic tasting "Jerk Chicken" made with 18 herbs and spices sourced from Jamaica and cooked on a far infrared grill.



☎098-923-3295

Address/101 Toguchi,
Kitanakagusuku Village
Hours/11:30~22:00
(L.O.22:00)

Closed/Mon·Every 4th Tue
Parking/available
HP/bamboocafeokinawa.com

☑ Accepted \$ Accepted



map



Italian pizza

Magna magna

MAP/P.31:㉒

A delicious aroma and smoke from the wood-fired oven wafts up from one corner of the Costa Vista. A lot of time and effort goes into the pizzas at Magna magna to make them a work of art, topped with cheese made from soymilk and a pizza base that is matured for at least 3 days.



☎098-935-1608

Address/1478 Kishaba,
Kitanakagusuku Village
Costa Vista Okinawa Hotel & Spa
Hours/13:00~22:00 (L.O 21:30)

Closed/Open 365 days/year Parking/available
HP/costavista.jp/restaurant



map



Margherita (L)
¥1,800

Try these tantalizing sweets available only in Okinawa!



Sweets & Petit Café Couple

MAP/P.31:㉓

A cake shop run by a lovely, smiling couple. They put their own original taste on classic cakes to give you something new that also have a sense of nostalgia. (German cake ¥ 300)



☎098-932-1452

Address/314 Shimabuku,
Kitanakagusuku Village
Hours/11:00~21:00
Closed/Wed·Every 4th Sun
Parking/available



Enjoy in Kitanakagusuku

LOCATION

Hidden-away spots where you can enjoy the blue waters of Okinawa and international cuisine.

Oriental Café

MAP / P.30-10

Enjoy the popular menu comprised of dishes from around the world, including pho, curry, borscht, and etc. They are prepared by the owner, who is also a certified food coordinator. There are always around 5 dishes to choose from and we also recommend the afternoon tea.



map

☎090-4353-4041

Address/172-1 Ogusuku,

Kitanakagusuku Village

Hours/10:00~17:00

Closed/Wed・Thu

Parking/available



Restaurants in amazing locations



Enjoy Italian cuisine and Okinawa's black beef while taking in the amazing views.



map

Grand Blue

MAP/P.31:06

Grand Blue cake is popular for its pizza and has also recently shifted its focus to a range of dishes featuring Okinawa's black beef. Delightful meals served with fantastic views.



☎098-935-5910

Address/522 Chunjun, Kitanakagusuku Village
Hours/Morning
※Sat, Sun and public holidays only
9:00~11:30 (L.O11:00)
Lunch11:30~16:00 (L.O15:00)
Dinner17:30~22:00
(L.O FOOD20:30•DRINK21:30)
Closed/Mon Parking/available
HP/grandblue-okinawa.com

📶 available 📶 Accepted



Okinawa Lobster
Lobster grilled with
home-made
sea urchin sauce + steak
¥3,300



American-style interior and terrace overlooking the ocean

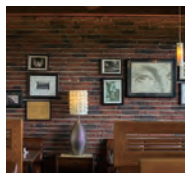


map

Pub Lounge Emerald

MAP/P.30:09

Enjoy a meal on the terrace with amazing views or dine in the long-established steakhouse that also offers fine scenery.



☎098-932-4263

Address/311 Shimabuku, Kitanakagusuku Village
Hours/Mon~Thu
10:00~21:30 (L.O 21:00)
Fri•Sat•Holiday
10:00~22:30 (L.O 21:45)
Sun
11:00~22:30 (L.O 21:45)
Closed/January 1st to 3rd/Old
Bon festival Parking/available
📶 available



Premium
rib steak
¥3,700





Relax and chill out surrounded by the natural greenery of Okinawa



map

Ayakari no Mori

MAP/P.31:⑧



Ayakari no Mori is a lifelong learning center and the perfect spot to read a book while you take in the amazing scenery or to enjoy a coffee on the terrace.



☎098-983-8060

Address/1214 Kishaba,
Kitanakagusuku Village
Hours/10:00~20:00
(Sat·Sun·Holiday9:00~17:00)
Closed/Mon·1st Wed of
every month
Parking/available
HP/ayakari.jp



Heart-felt hospitality for the five senses based on the necessities of life; food, clothing and shelter.



map

EM Wellness Resort Costa Vista Okinawa Hotel & Spa

MAP/P.31:⑩



The lunch menu, served up with the fantastic views and is gentle on the body and popular among people of all ages.

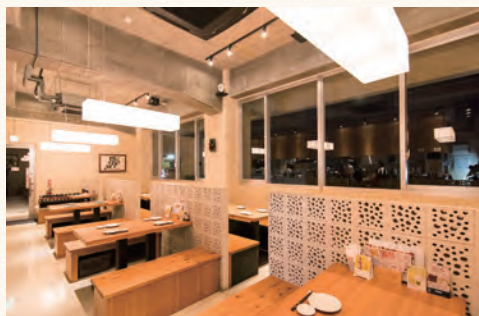


☎098-935-1500

Address/1478 Kishaba,
Kitanakagusuku Village
Hours/Lunch buffet
11:30~14:30
Closed/Open 365 days/year
Parking/available
HP/costavista.jp/restaurant
📶 available 📄 Accepted



KITANAKAGUSUKU NIGHT SPOT



Fresh sashimi is sourced from the local fish markets each morning. Try the popular jumbo Asa seaweed tempura (¥480) or deep-fried pig's feet (¥580).



Our basic philosophy is embracing "bonds with others".
Visit once and you will become a regular.

En dokoro Yushinmi

MAP/P.31:19

Just as the name "En dokoro" (place where bonds are made) suggests, this restaurant cherishes the bonds created with local guests and visitors alike. Situated in an elevated position, you can also enjoy beautiful night view in the evenings.



map

☎098-935-5657

Address/1F, 470-6 Chunjun,
Kitanakagusuku Village

Hours/17:30~24:00 (L.O.Food23:00, Drink23:30)

Closed/Sun・Holiday

Parking/available

HP/r.gnavi.co.jp/nweew9u00000

Night views



Area around Costa Vista Okinawa Hotel&Spa

We recommend you take in the view from the hotel terrace or go all out and enjoy the view from the hotel bar from its large windows.



Oshiro area (near the Toge no Chaya)

Quiet night view point that are only visited by few people.



KITANAKAGUSUKU
LOCATION SPOT



Area around Café Subaco

Driving to the small street that led to a charming little cafe. You will be amazed by the wonderful view overlooking the east coast.

Address/Chunjun, Kitanakagusuku Village



Kitanakagusuku Village Fureai no Mori

Enjoying the fantastic view during the day and the night. In the open park. You may even be amazed by the tree nymph butterflies and beetles.

Address/446-1 Chunjun, Kitanakagusuku Village



Comfortable café to visit after taking in the views

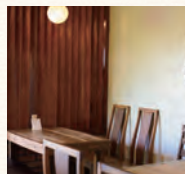
Food for the body and soul made using locally sourced produce

Café Subaco
MAP/P.30②



map

Small village café located at the top of narrow path that offers up views of the east coast in the distance. Their signature dish is a lunch plate packed full of vegetables made using locally sourced produce.



☎098-989-6282

Address/#69 264-4 Chunjun, Kitanakagusuku Village

Hours/11:30~17:00 (L.O16:00)

Dinner also available on Saturdays

18:00~22:00(L.O21:00)

Closed/Fri

Parking/available



AEON MALL Okinawa Rycom

Do not miss the great aquarium which has more than 1,000 fish at the main entrance!
Please enjoy the weekend events and variety of world wide food!
Have a wonderful day at the Okinawa's largest shopping mall!



Spend the whole day shopping and eating to your heart's content!

Okinawa Rycom also has a number of spots that offer fantastic views.
Enjoy a meal looking out over the views from the terrace in the food court.



☎098-930-0425
(AEON Mall Specialty Shop) MAP/P31:㊸
☎098-983-8888
(AEON Style)
Address/4-gaiku, Tochi-kukaku seirichinai
Awase, Kitanakagusuku Village
Hours/*Please note that business hours
are different in each store.
08:00~22:00 AEON Mall 2F
09:00~23:00 AEON Style 3F-4F
Closed/Open 365 days/year
Parking/available
HP/okinawarycom-aeonmall.com
☑ Accepted ☑ available

Local souvenirs you can buy at Rycom



Firefly glass crafted on the image of the color of the ocean surrounding Okinawa by the Chouhichi Okinawa Glass Studio.



Asa seaweed flavored Okinawan biscuits infused with Asa seaweed, a local specialty, are only available in Kitanakagusuku Village.



This organic, caffeine-free coffee makes the ideal gift for women.



Take a deep breath of this fresh mist made using essential oil from the Ryukyu Island Pine. Experience the forest fragrance of the Yanbaru area of Okinawa.

Asa seaweed is packed full of nutrition and is a specialty of Kitanakagusuku Village. Try it in this delicate flavored soup.



Reproduction of flavors from the Ryukyu Dynasty. Enjoy the combination of flavor created from the white, brown and black rice varieties.

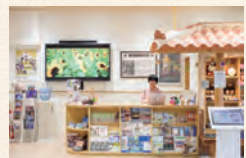


Natural sea salt taken from deep ocean water surrounding Kume Island in Okinawa dried under the sun and left to mature.

We have all your Kitanakagusuku souvenirs!

Travel Mart Kitapo

Aeon Mall Okinawa Rycom
The tourist information center is located just to the left of the Arrival Gate. Why not drop by if you are looking for ideas for places to go after your shopping? Information in English and Chinese available.



SPOT

Kitanakagusuku cultural facilities

Traditional Japanese home where you can experience the lifestyle of Okinawa with all of the five senses

The Nakamura House

Listed by the Japanese government as an important cultural asset

MAP / P.31:📍

The Nakamura House surrounded by garcina and stone walls, its red tile roof and stone-paved paths displays all the characteristics of pre-war residential architecture in Okinawa and has been listed by the Japanese government as an important cultural asset.



map

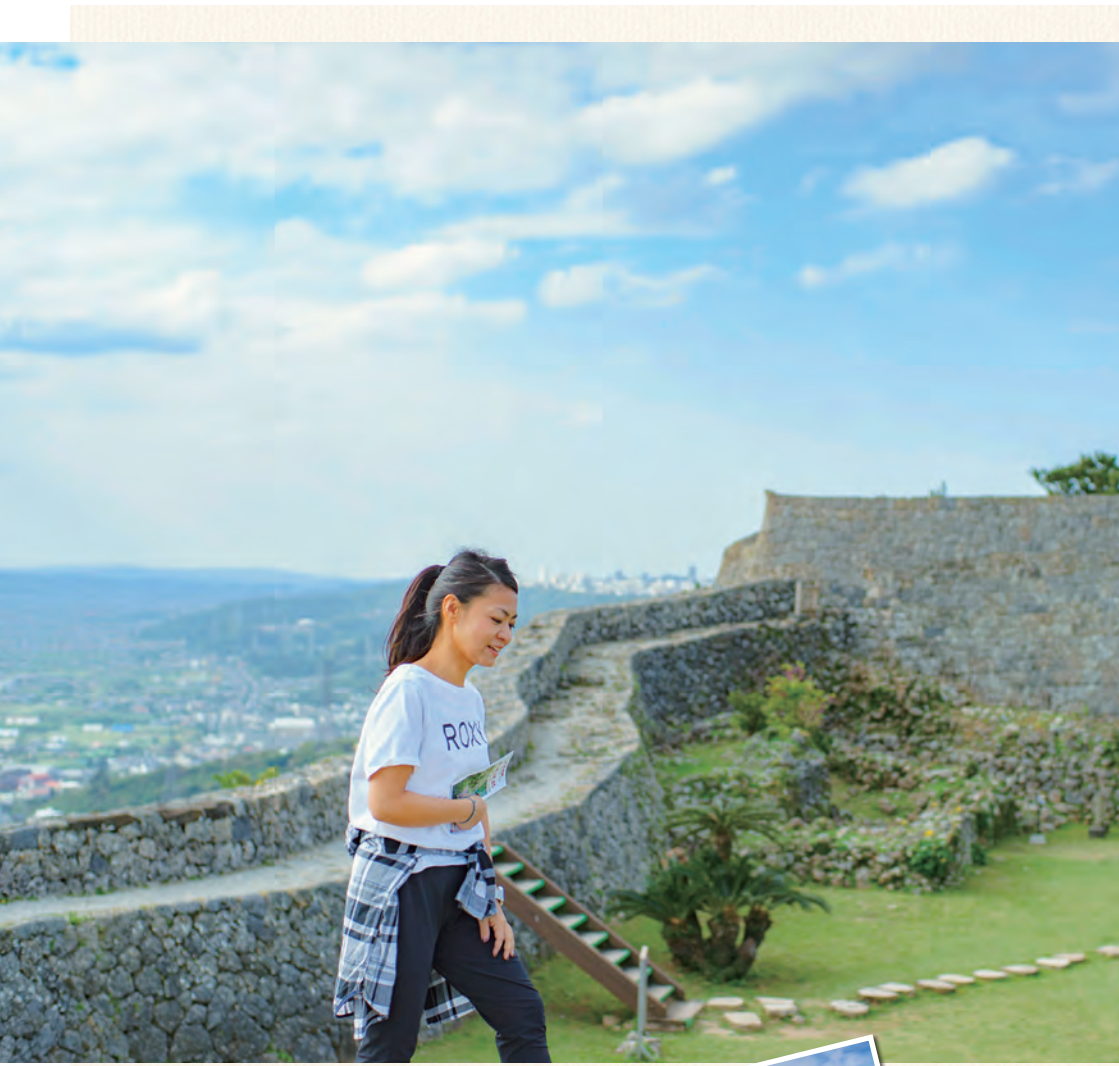
☎098-935-3500

Address/106 Ogusuku,

Kitanakagusuku Village

HP/nakamura-ke.net

Closed/Tue



World Heritage Site situated on a hill overlooking the east and west coast.

WorldHeritage Nakagusuku Castle Site

MAP / P.30:23

The Nakagusuku Castle Site were listed as a World Heritage Site in 2000. Since ancient times, the castle was used as a strategic travel point and is also famous for the view overlooking the east and west coast.



map

☎098-935-5719

Address/503 Ogusuku,
Kitanakagusuku Village
HP/nakagusuku-jo.jp



Exploring the area around Kitanakagusuku Castle

Onishi Terrace Golf Club



Ryukyu Asa seaweed soba noodles ¥700



Restaurant Toge no Chaya
MAP/P.30:㉔



map

This restaurant was built on an idea of the owner Shimabukuro-san, to create a station (tea house) where people could share local community information. We recommend the healthy cuisine you can enjoy together with the island salad buffet.

☎098-935-3718

Address/170 Ogusuku, Kitanakagusuku Village
Hours/11:30~15:00
Closed/Mon
Parking/available

Nakagusuku Castle Site



Saa fuu fuu
MAP/P.31:㉕



map

The light, additive-free soup is an absolute delight, made from stock using pork and chicken that has simmered away for more than 8 hours. It was just as the restaurant owner, Niisato-san told us "It is the perfect remedy for a hangover".

☎098-935-5376

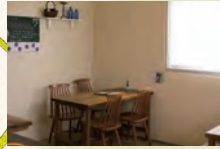
Address/150 Ogusuku, Kitanakagusuku Village
Hours/11:30~14:30
Closed/Tue
Parking/available



『Yushi Asa seaweed soba noodles ¥600』



Sesame curry Udon noodles with soft-boiled egg ¥900



The shaved ice cones (¥500~) which you can sit down and enjoy or take with you are made using soft water ice to give a smooth texture. We also recommend the "Special Sans Souci parfait."

C Ryu-Kyo Sweets **SANS SOUCI**
MAP/P.31 ㉔



map

The popular curry udon is a surprising collaboration of Okinawa (Ryukyu) and Kyoto, combining ingredients from Okinawa, including eggs, chicken, pork and brown sugar, with elements from Kyoto, such as stock, spring onions, shichimi chili and green tea powder etc. and is the owner's signature dish.

☎098-935-1012

Address/#1822 Parkside, 150-3 Ogido, Kitanakagusuku Village
Hours/11:00~15:30 (L.O 15:00 Lunch)
15:00~17:30

(Weekdays: Sweets and drinks only)
17:30~21:00 (L.O 20:00 Dinner)

Closed/Irregular holidays Parking/available
HP/sanssouci-kitanaka.com



D Hosana
SANS SOUCI



D Hosana baked sweets and pottery
MAP/P.31 ㉔



map

This small shop located atop a hill offers a range of home-made sweets made without additives and fragrances so that you can enjoy the natural taste of the ingredients. The shop also sells the pottery dishes used to beautifully present the baked sweets in a flash of color.



☎090-3410-5563

Address/#1702 Parkside970 Adaniya, Kitanakagusuku Village
Hours/11:30~18:00
Closed/Sun·Mon
Parking/available



recommended by the
local area promotion team

Popular spots around Kitanakagusuku



Lobster and tomato cream
sauce pasta set ¥1000



Kenta-kun, the restaurant's
resident dog will greet you.
Also on Airbnb.

Exquisite pasta served
in an American
diner-style interior

Ucchee'sCafe

MAP / P.30:㉔

Ucchee's Café offers a range of ingredi-ent-packed pasta along with a variety of soups and curry for pasta. It uses the fresh pasta sourced from Nagano and is infused with spinach.

☎098-989-9944

Address/1911 Toguchi, Kitanakagusuku Village

Hours/11:00~20:00 (Lo19:00)

Closed/Wed Parking/available

HP/uccheeex.win.com/ucchees-cafe



map

Sometime Sandwich
¥980



Everything from the bread
on the sandwich plate is
hand-made and is also
made to cater for people
with allergies.

Relaxing café with
a private feel

Sometime

MAP / P.30:㉔

Everything from the bread on the sand-wich plate is hand-made and is also made to cater for people with allergies.

☎098-930-6566

Address/1493-1F Shimabuku

Kitanakagusuku Village

Hours/11:30~18:00 (L.O.17:00)

Closed/Thu

Parking/available



map



Authentic Japanese
cuisine and Japanese
sake in Okinawa

Japanese Cuisine Raku

MAP / P.30:㉔

Raku was started by the desire of the owner to spread the flavors of mainland Japan to Okinawa and offers a range of Japanese sake and cuisine with approx. 50 varieties of Japanese sake on offer at any time.

☎098-989-3582

Address/1251-5 Shimabuku, Kitanakagusuku Village

Hours/18:00~24:00 Closed/Sun

Parking/available

HP/miyabayashi1.ti-da.net available



map

Make a list of the places you want to visit!!

Manju ¥120
Pack of three Inari ¥300



Manju (steamed bun) that symbolizes Kitanakagusuku made using the local specialty, Asa seaweed



map

Gusuku manju

MAP/P.31:㉓

This carefully hand-made local specialty "Gusuku manju" is made using lavish amounts of Asa seaweed from Kitanakagusuku Village.

☎098-935-3964

Address/230 Chunjun,
Kitanakagusuku Village

Hours/9:00~17:00 (Closed once sold out)

Closed/Open 365 days/year Parking/available



Taco rice cheese
with lettuce ¥600



If you don't know what to order on your first visit, go with the "Taco rice cheese with lettuce"

Supersized! Real
Okinawan soul food



map

King Tacos Kitanaka

MAP/P.30:㉔

King Tacos is famous for its taco rice and is affectionately referred to by the locals as "Kin Taco". The combination of spicy sauce and heaped ingredients is a perfect match.

☎098-933-1868

Address/307 Shimabuku,
Kitanakagusuku Village

Hours/11:00~24:00



It has Chanpuru(Okinawa's traditional meal), original menu, and many Izakaya menu. We welcome group diners and also single diner.



"Meal is made by love"
Izakaya that is run by the local
had been open!!



map

Izakaya Ippo

MAP/P.30:㉕

Owner is born at Kitanakagusuku. He had gathered variety type of Japanese Sake and Shouchuu for the local customer. Everyone who comes to the pub will forget about the time! All the foods are delicious.

☎098-927-1934

Address/1474-1 Shimabuku,
Kitanakagusuku Village

Hours/18:00~25:00(L.O.24:00)

available
Close/Tue(Irregular holidays)



Check
what's on
before you
arrive!

KITANAKAGUSUKU EVENT CALENDAR

6

JUNE

5

MAY

4

APRIL

3

MARCH

2

FEBRUARY

1

JANUARY



Moonlight Concert

[June]

Local community concert held on a full moon following the end of the wet season.



Sunflower in Kitanakagusuku

[January]

The Sunflower Festival is held to celebrate Japan's earliest blooming sunflowers. The highlight of this festival is the blanket of sunflowers that covers the fields.



Asa Seaweed Season

[February]

This is the height of the Asa seaweed harvest season, a local specialty of Kitanakagusuku.

What to wear

Day after day of hot, humid weather. Take measures against sunburn and high humidity.



The sun rays grow gradually warmer around this time of year. It is the most pleasant time of the year in Okinawa.



This time of year is characterized by strong winds, making it feel colder than the actual temperature.



12

DECEMBER

11

NOVEMBER

10

OCTOBER

9

SEPTEMBER

8

AUGUST

7

JULY



Kitanakagusuku Village Agricultural, Forest and Fishery Products Fair

[December]

Fair selling a range of agricultural, forest and fishery products from the village.

Kitanakagusuku Shiosai Festival

[October]

This is a festival held once a year for the local villagers.



Kishaba Lion Dance Festival

[August]

The lion dance is thought to ward off evil spirits and bring good fortune and prosperity to the region. This event is also listed by Kitanakagusuku Village as an intangible cultural asset.

Kuzumakimachi Joint Produce Exhibition

[November]

Joint produce exhibition held with our sister village, Kuzumakimachi in Iwate Prefecture.



Sujigwa Art Museum

[November]

This is an event held to make the entire village resemble an arts museum.

Youth Eisa Festival

[August~September]

Youth associations from around the village come together for this festival to perform the eisa dance with their heart and soul.



Pleasant time of the year after the peak of the heat.



Take note of typhoon alerts before heading out.



Take a light shirt and sunglasses.



Kitanakagusuku map





Kitanakagusuku Village Tourism Minister

Follow the 3 steps below to get ready to serve in your role as the Tourism Minister of Kitanakagusuku Village.

- ① Anyone can become Tourism Minister as long as they have this booklet. Show an interest in Okinawa and Kitanakagusuku Village and promote the village in your own style.
- ② To be appointed as Tourism Minister, read the QR code in the center of the page and click "Like" on the "Kitanakagusuku Tourism Association" Facebook page.
- ③ After liking the page, post a message stating you want to become a Tourism Minister.



CHECK!!

Listen to the music of Okinawa while you embark on a pleasant journey.

We have carefully selected some background music to listen to while you move around to fully enjoy your travels around Okinawa. Once you have read the QR code, experience Okinawa with both your eyes and ears as you listen to music while traveling to your destination.

*Playback is free however charges apply for packet downloads.



Youtube
Playlist



AWA
Playlist

[produce&writer]
Kitanakagusuku Local Area Promotion Team
Kasumi Yamaguchi,
Yuuki Matsumura,
Nami Yumura

[editor Chief+design]
Yuuya Makishi
[photographer]
CHOTARO
[editor]
Kurando Funabashi

[Publication]
Kitanakagusuku Village Office
426-2 Kishaba, Kitanakagusuku Village,
Okinawa Prefecture 901-2392
[Printing]Toyo Plan

LETTER OF APPOINTMENT AS TOURISM MINISTER OF KITANAKAGUSUKU VILLAGE

To:



From Okinawa to the rest of Japan and the world
You have been appointed as Tourism Minister of
Kitanakagusuku Village to play a leading role
in promoting the charm of Kitanakagusuku Village
to the rest of the world.

Your first job as Tourism Minister will be to visit
Okinawa and Kitanakagusuku Village.
Delicious food, breathtaking scenery and warm,
friendly people await your arrival.

Your next job is to tell people all around the world about your experience
in Kitanakagusuku Village.
Let's work together to put smiles
on the faces of more people!

Kitanakagusuku Tourism Association



I'm glad I came! Kitanakagusuku



Permanent
edition
Woof!

